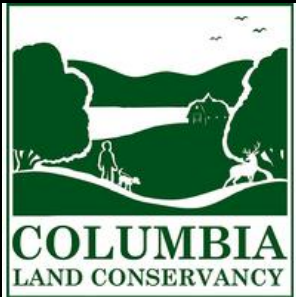
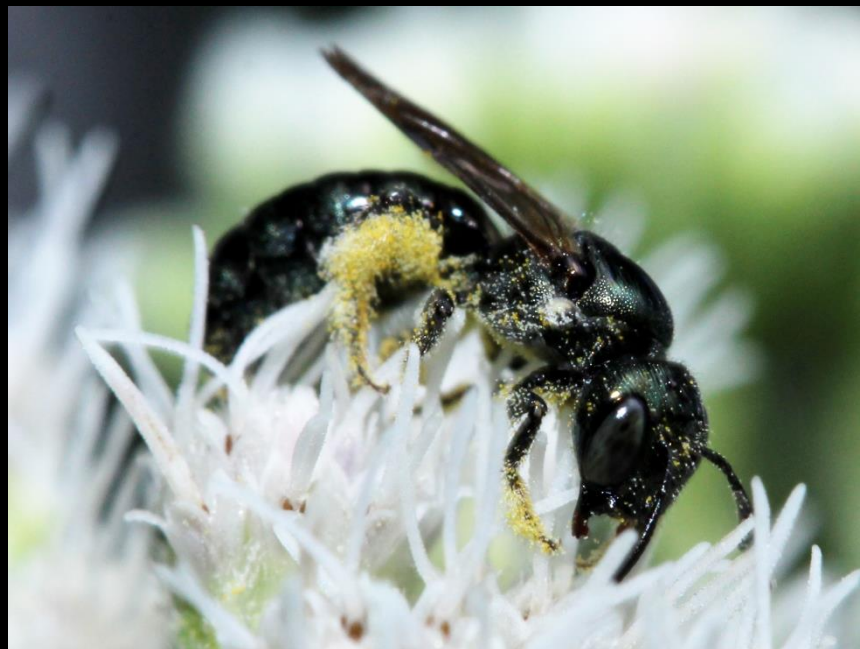


Columbia County Butterfly Course: Session 1





Butterflies are Lepidopterans



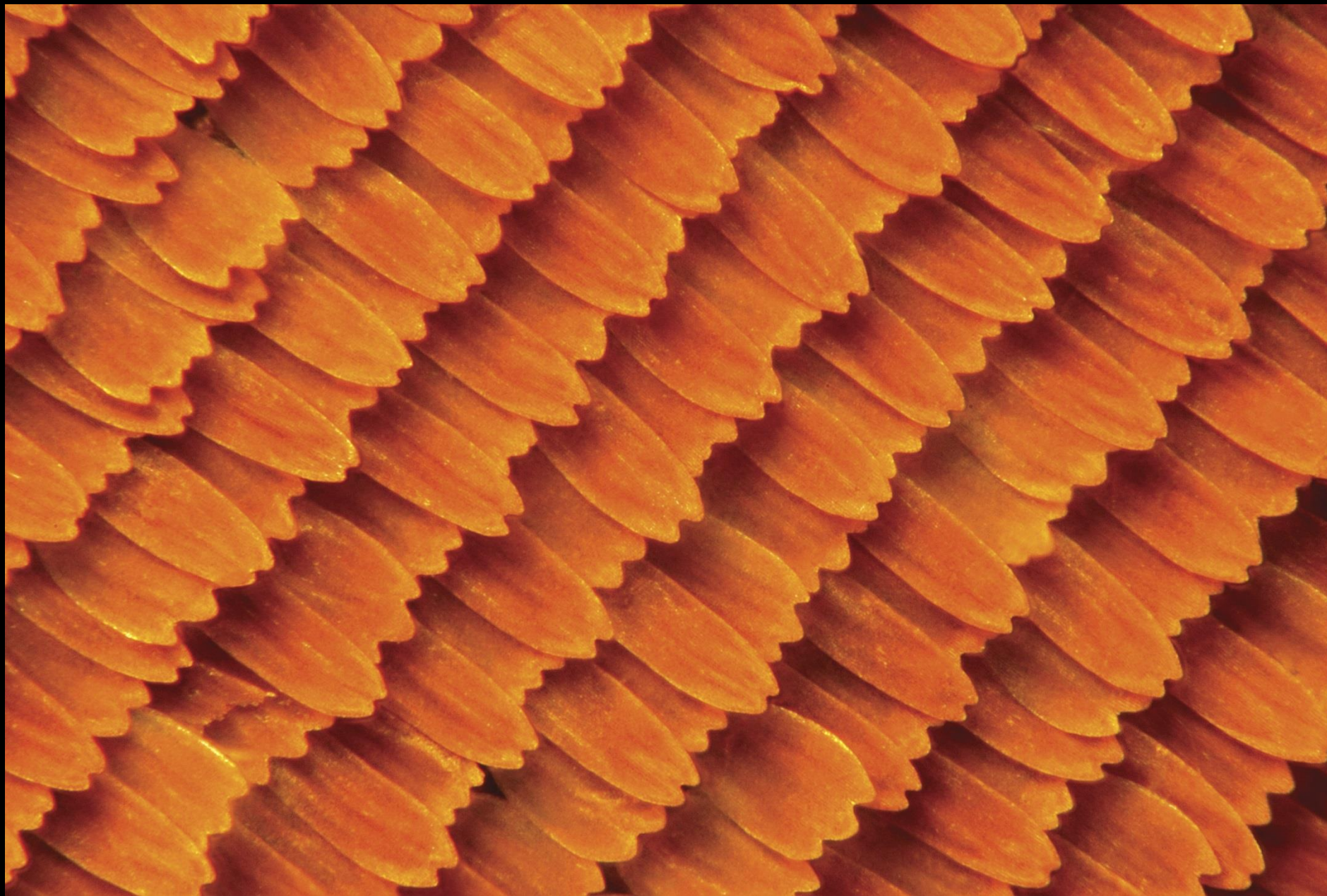


Photo by Raul Gonzalez



Clubbed Antennae



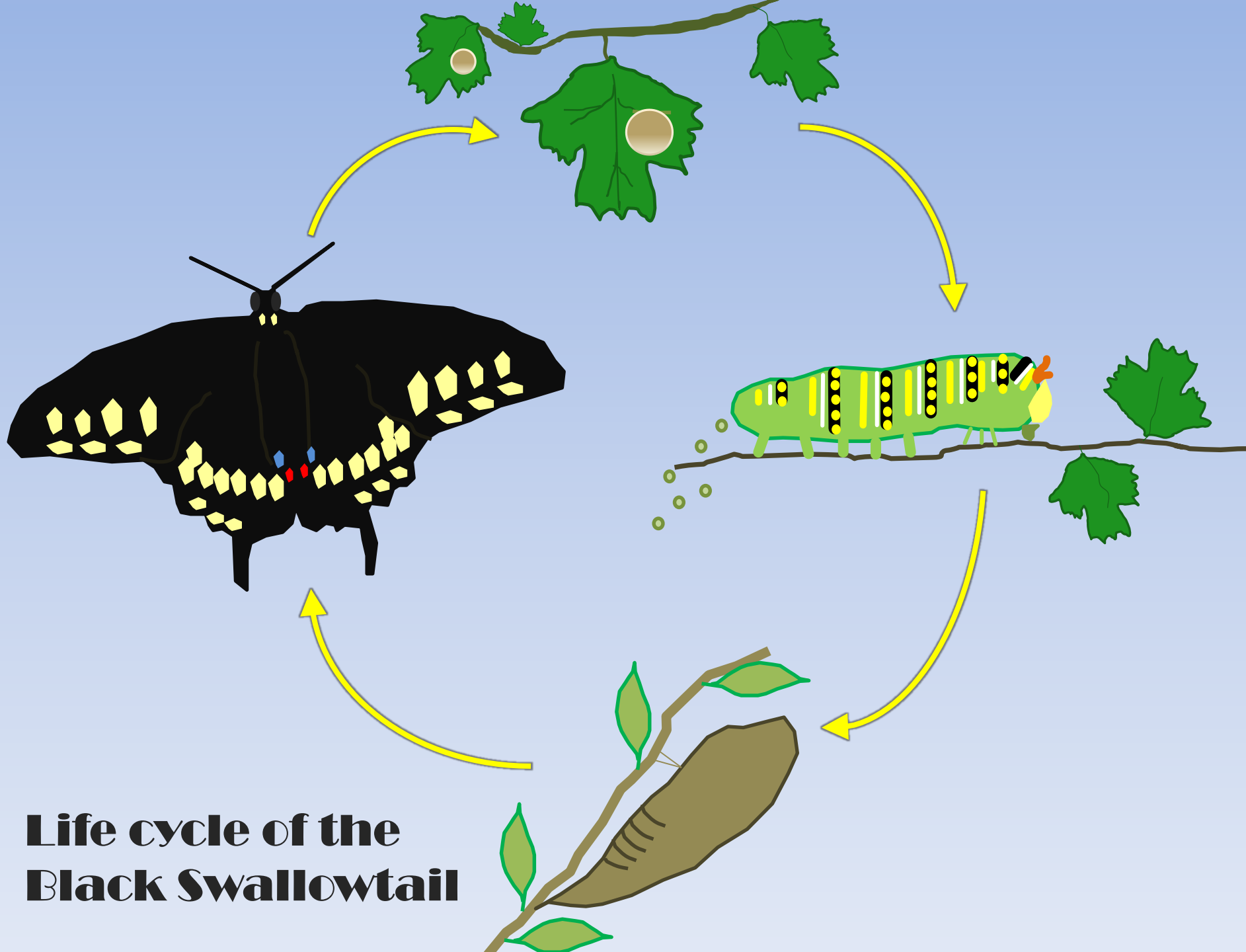
Peck's Skipper



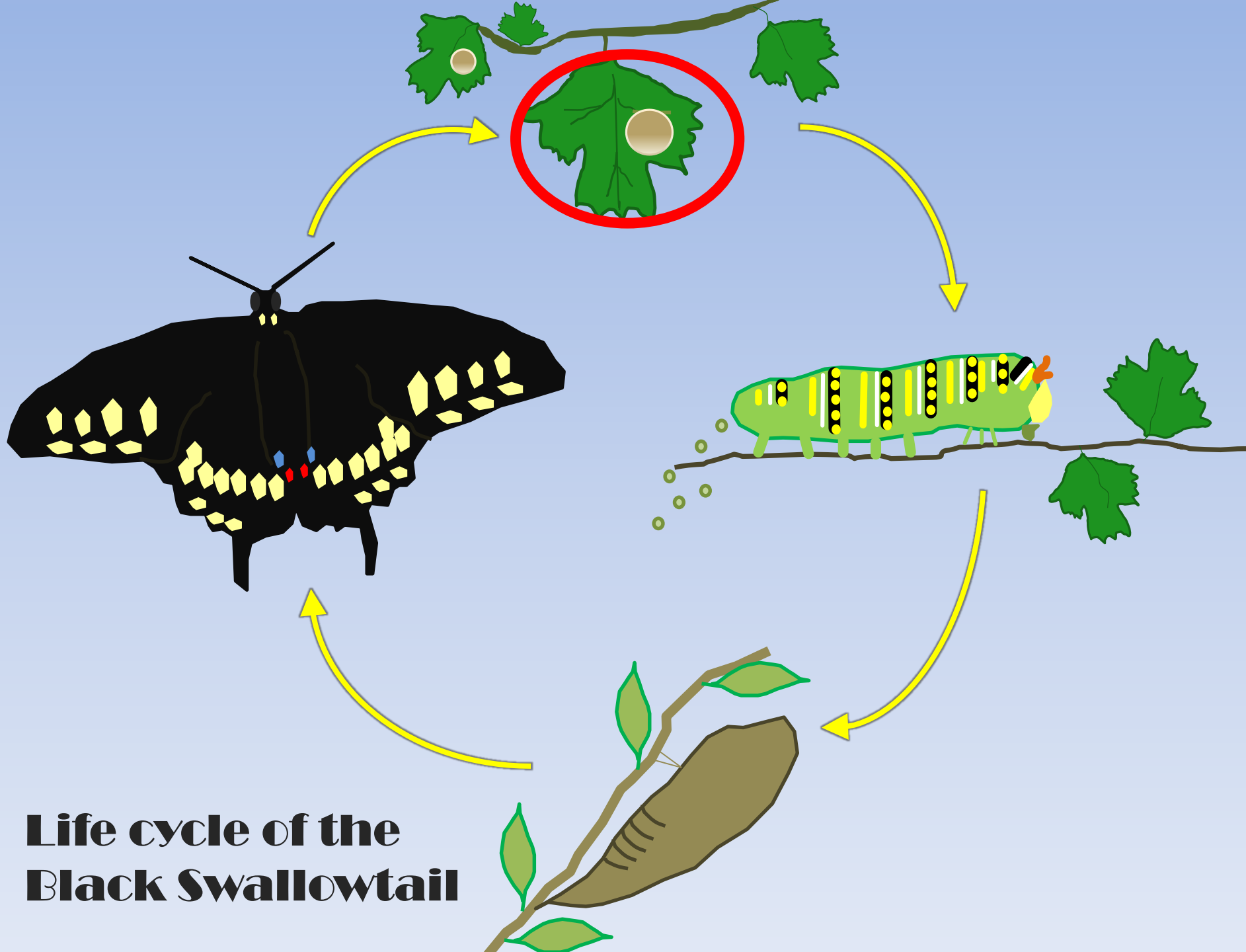


Polyphemus Moth

A four-stage life cycle



**Life cycle of the
Black Swallowtail**



**Life cycle of the
Black Swallowtail**



Northern Metalmark. Photo by David Wagner



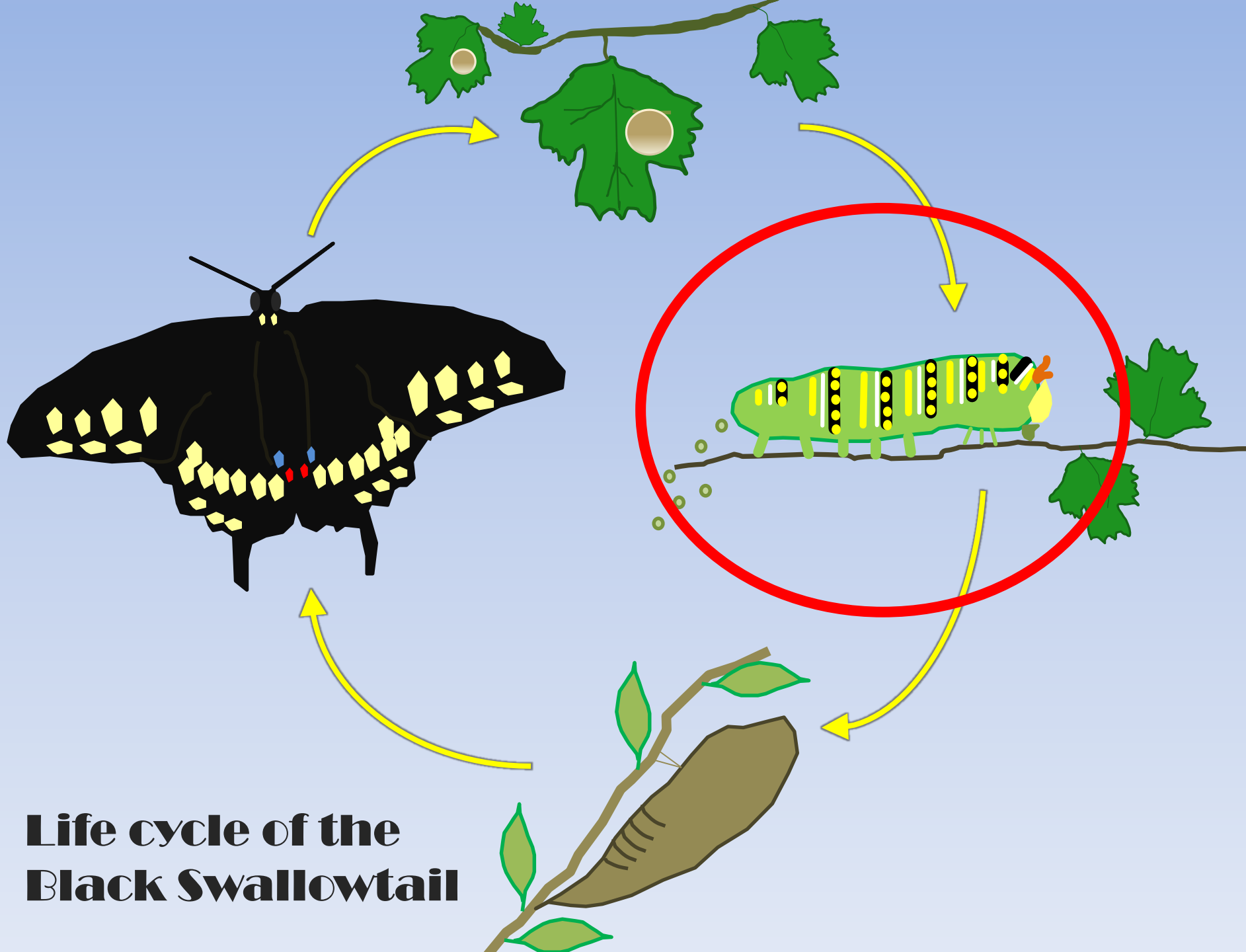
Black Swallowtail Photo by Jay Cossey











**Life cycle of the
Black Swallowtail**





Eastern Comma caterpillar



Black Swallowtail caterpillar

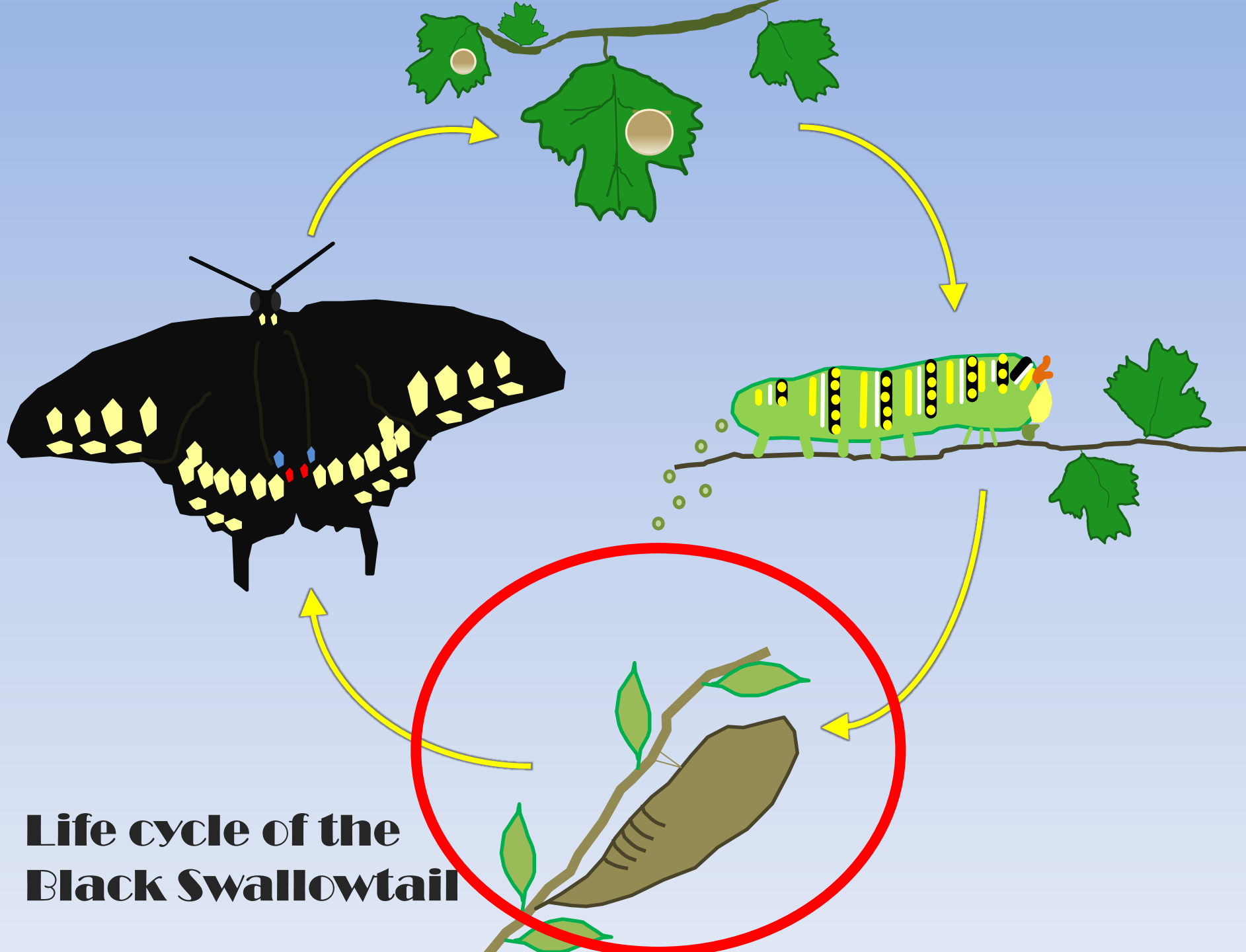




Caterpillar photo by Northern Woodlands







**Life cycle of the
Black Swallowtail**



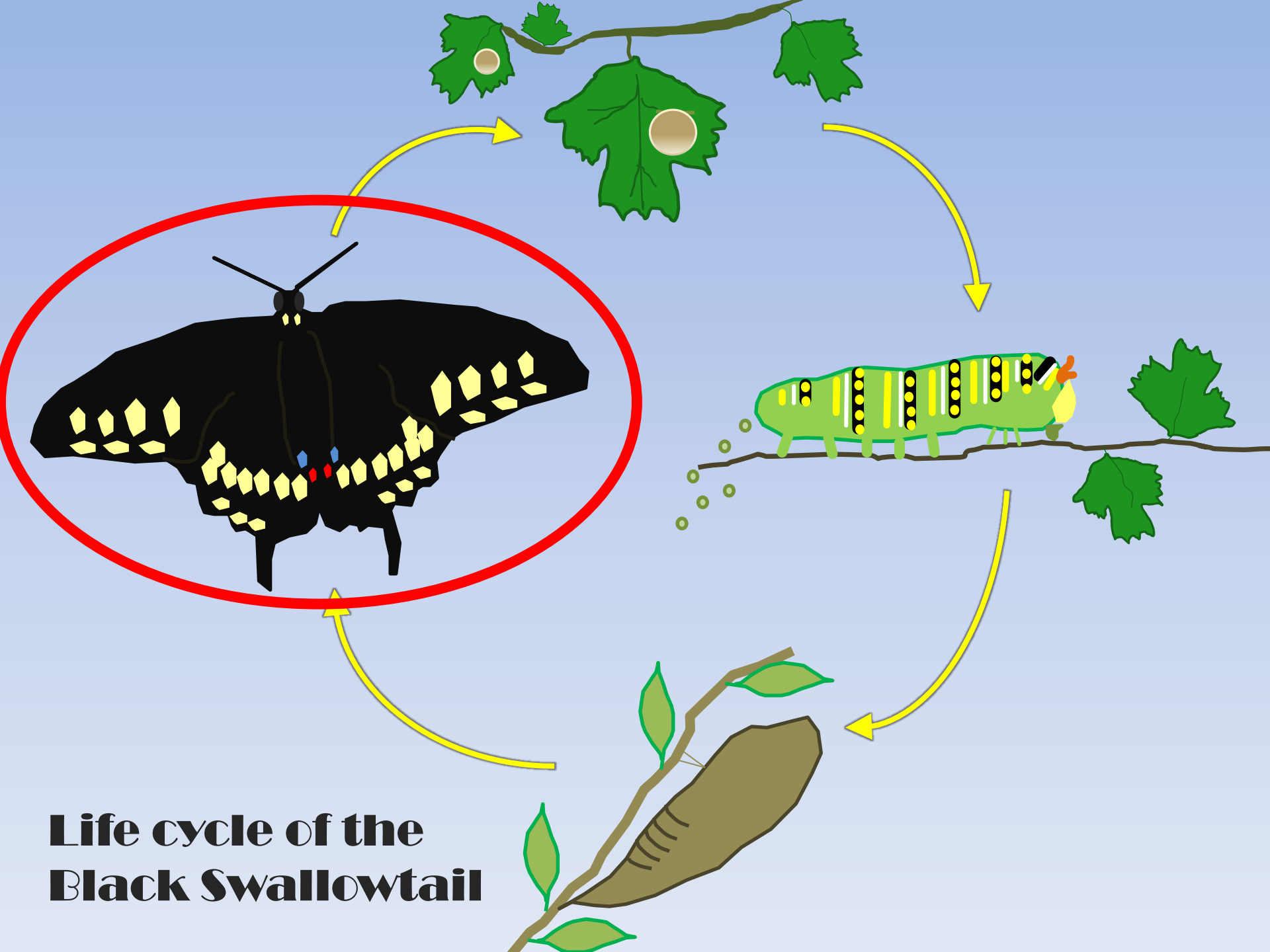
Monarch pupa



Baltimore Checkerspot pupa



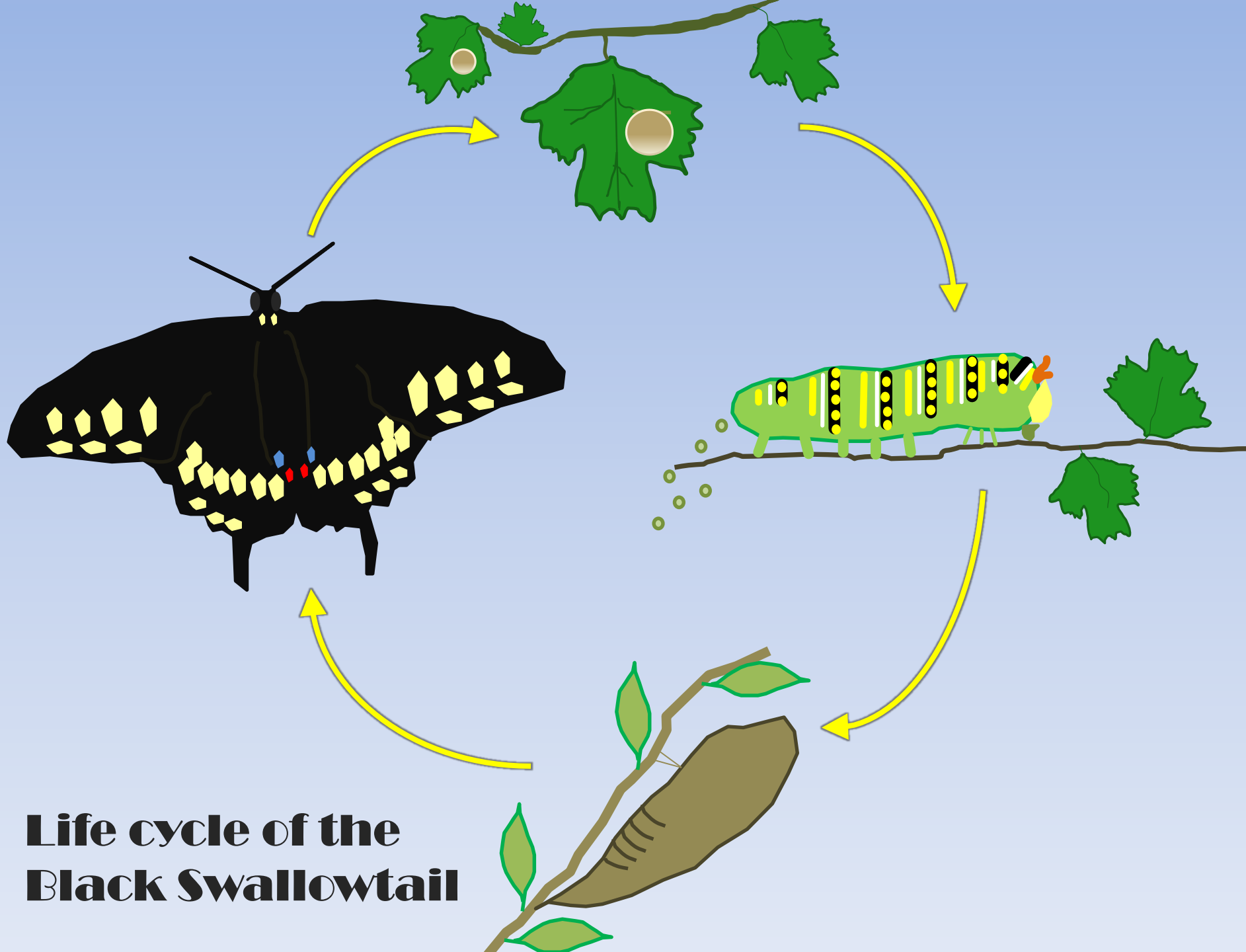
Anglingwing pupa



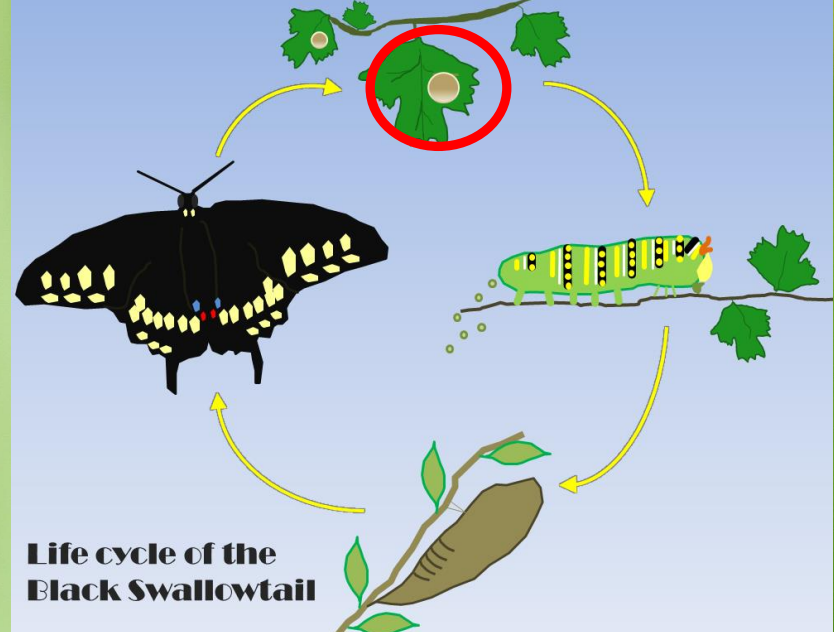
**Life cycle of the
Black Swallowtail**

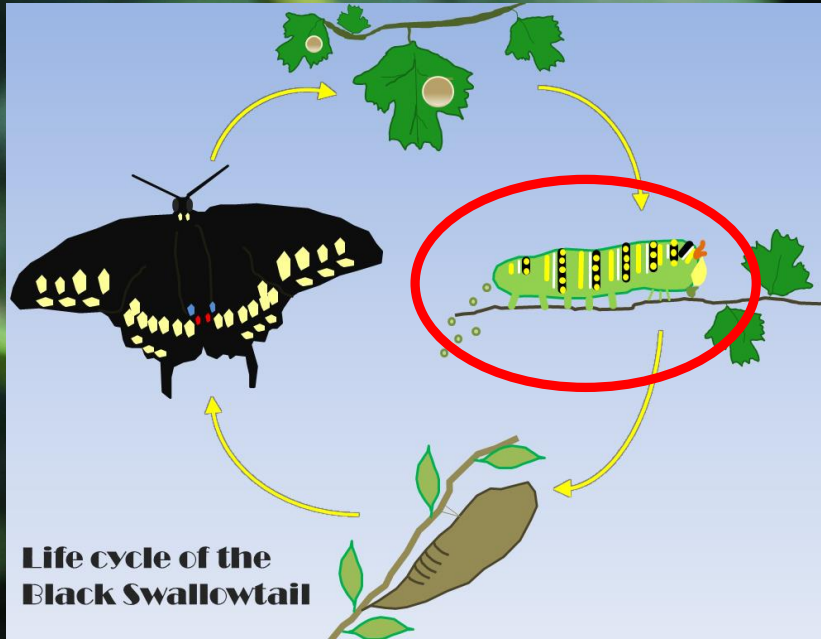


Butterflies in Winter

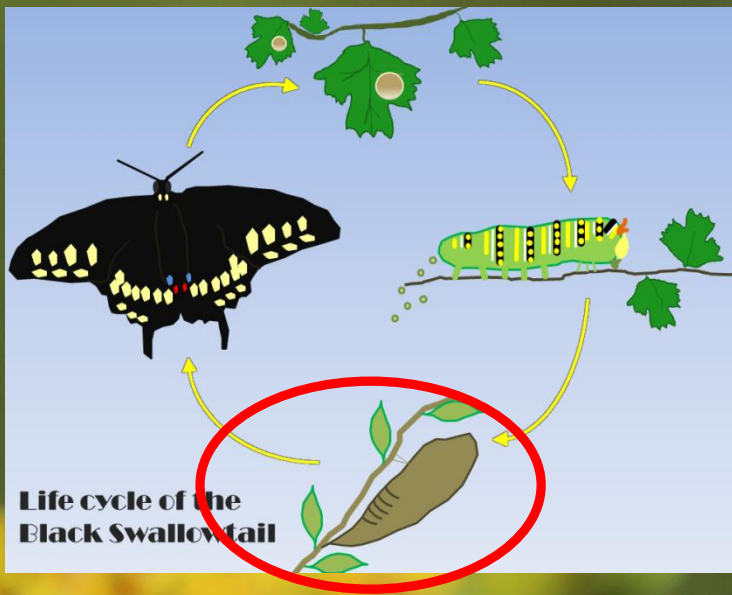


**Life cycle of the
Black Swallowtail**

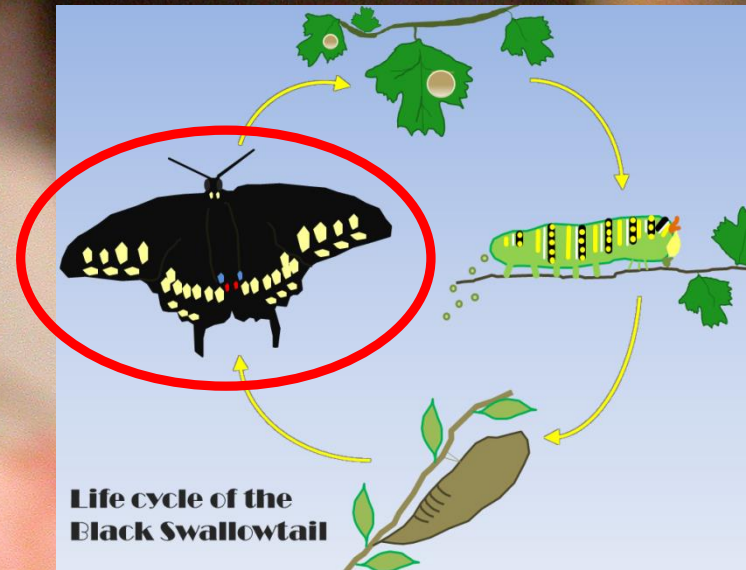




Viceroy



Juniper Hairstreak





Some species migrate
to avoid below freezing temps



Butterfly conservation

The New York Times Magazine

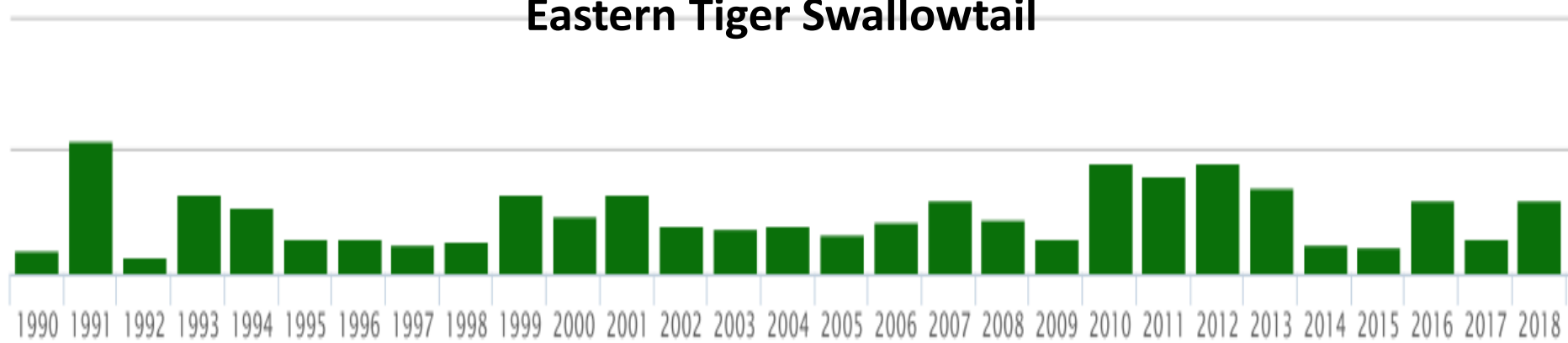
FEATURE

The Insect Apocalypse Is Here

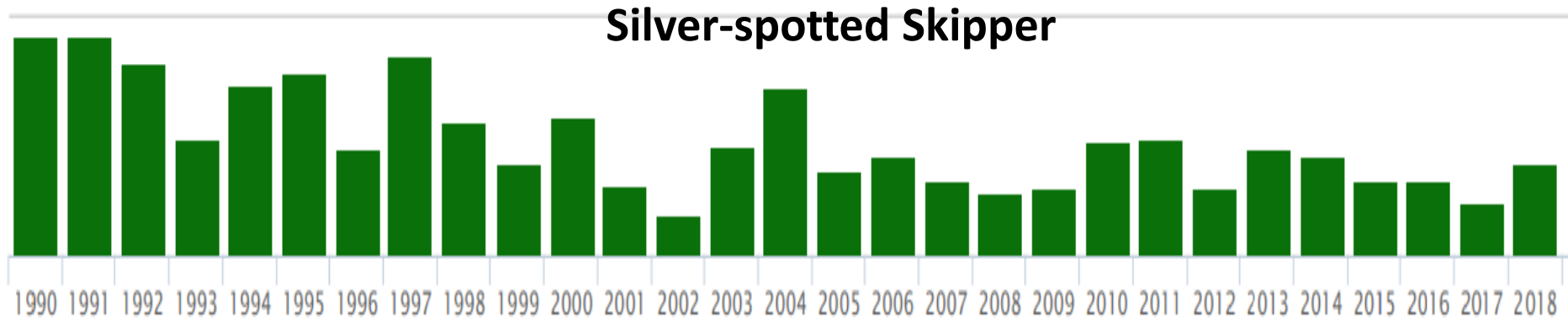
What does it mean for the rest of life on Earth?



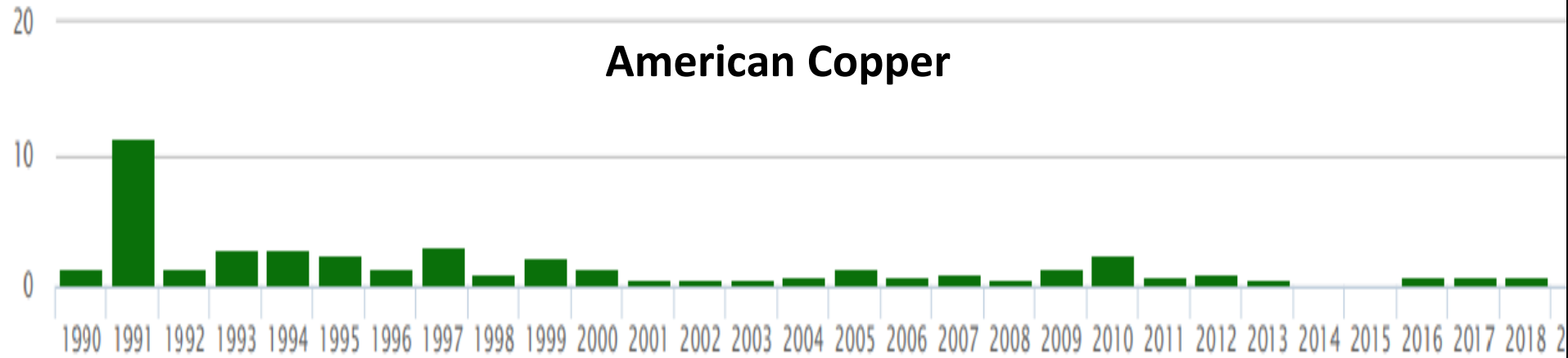
Eastern Tiger Swallowtail



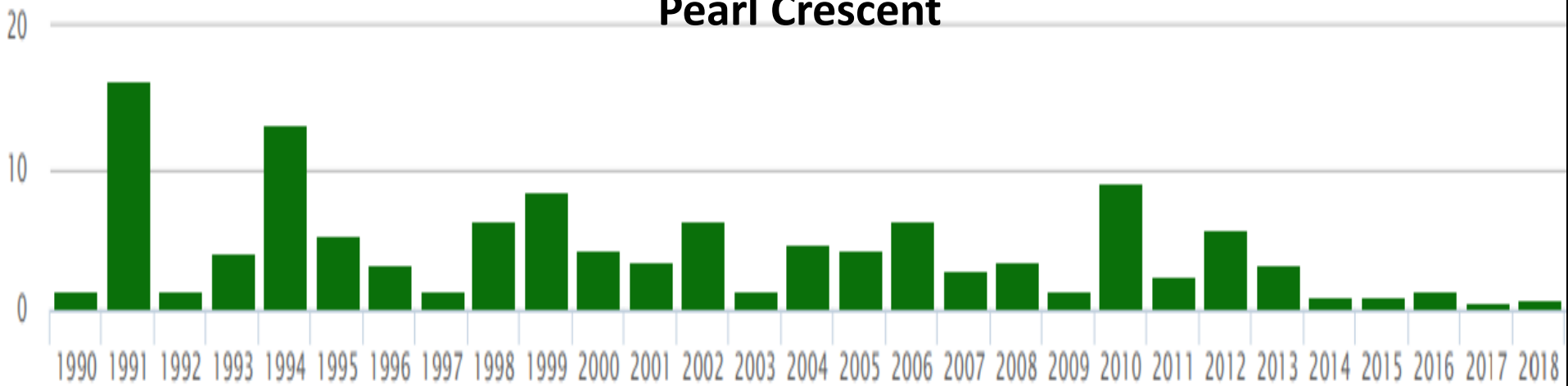
Silver-spotted Skipper



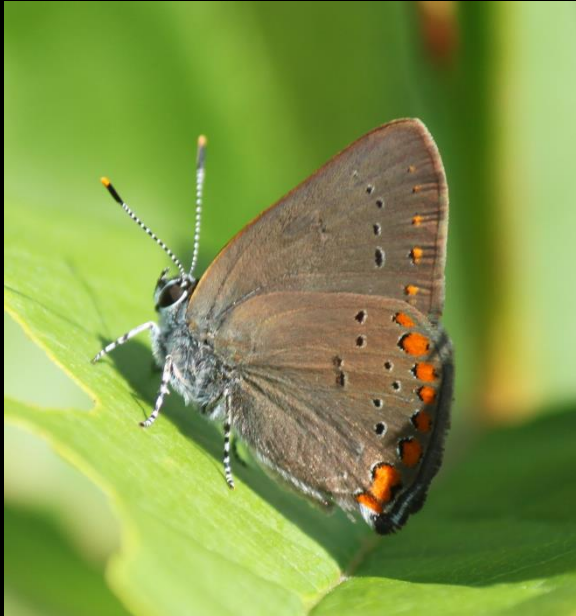
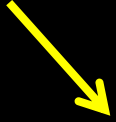
American Copper



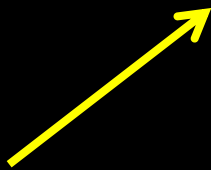
Pearl Crescent



In old fields with
suitable flowers



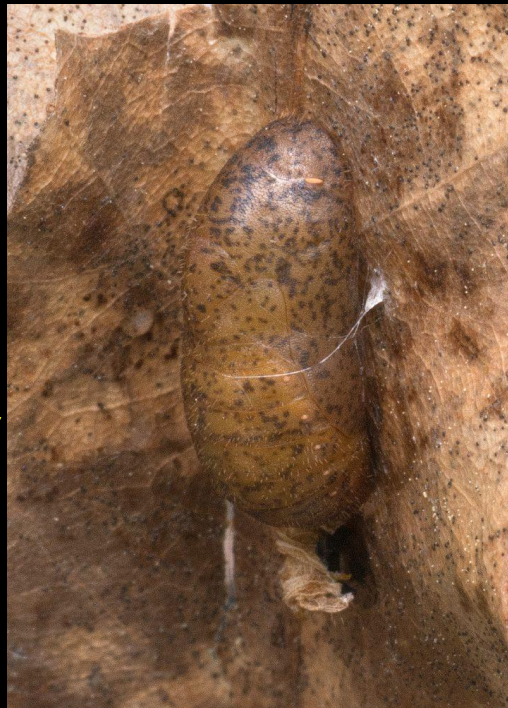
In leaf litter



Base of tree, on
bark



In leaf litter and
in trees



Egg, caterpillar and pupa photos
by Alabama Butterfly Atlas