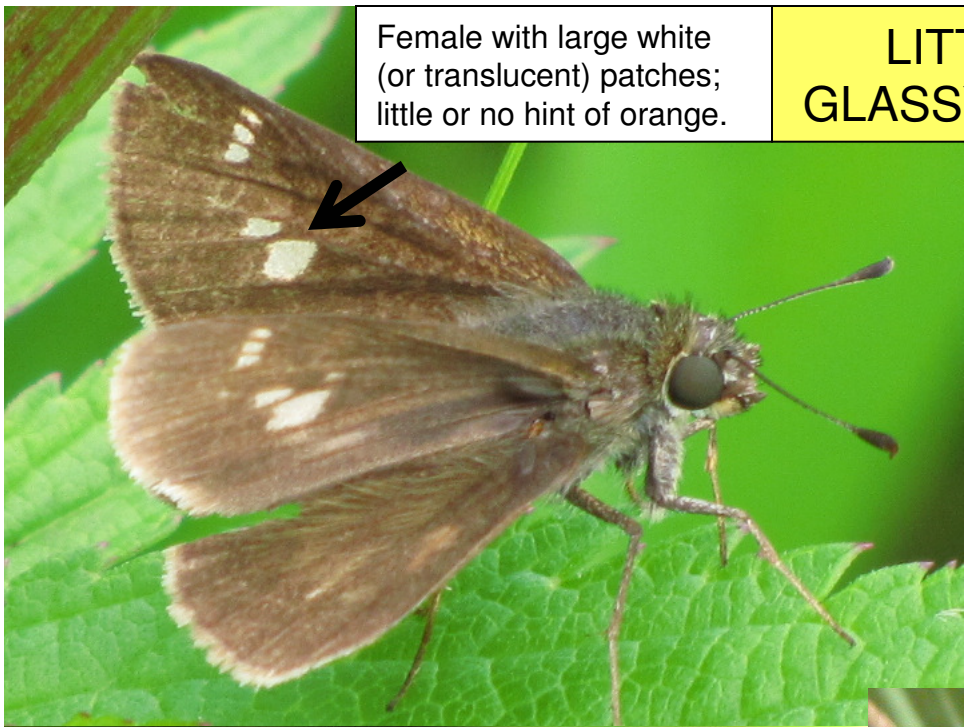
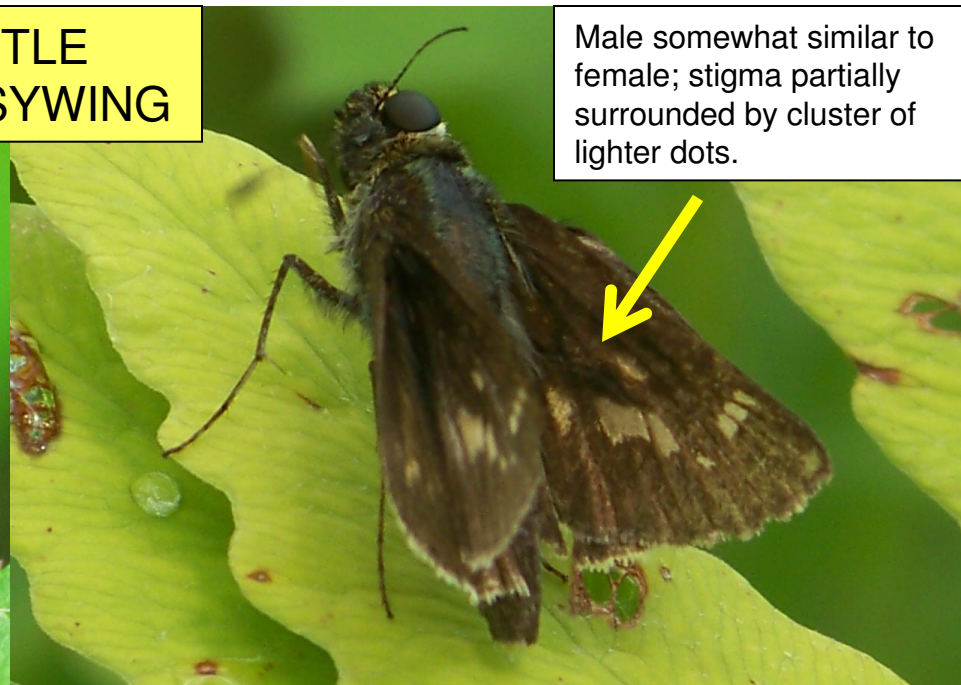


## LITTLE GLASSYWING

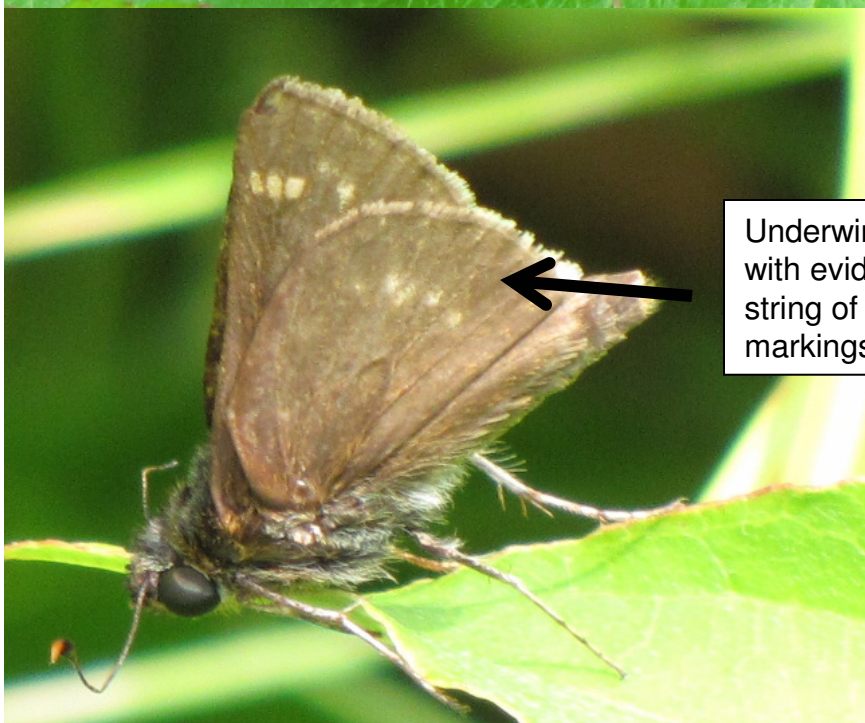
Female with large white (or translucent) patches; little or no hint of orange.



Male somewhat similar to female; stigma partially surrounded by cluster of lighter dots.

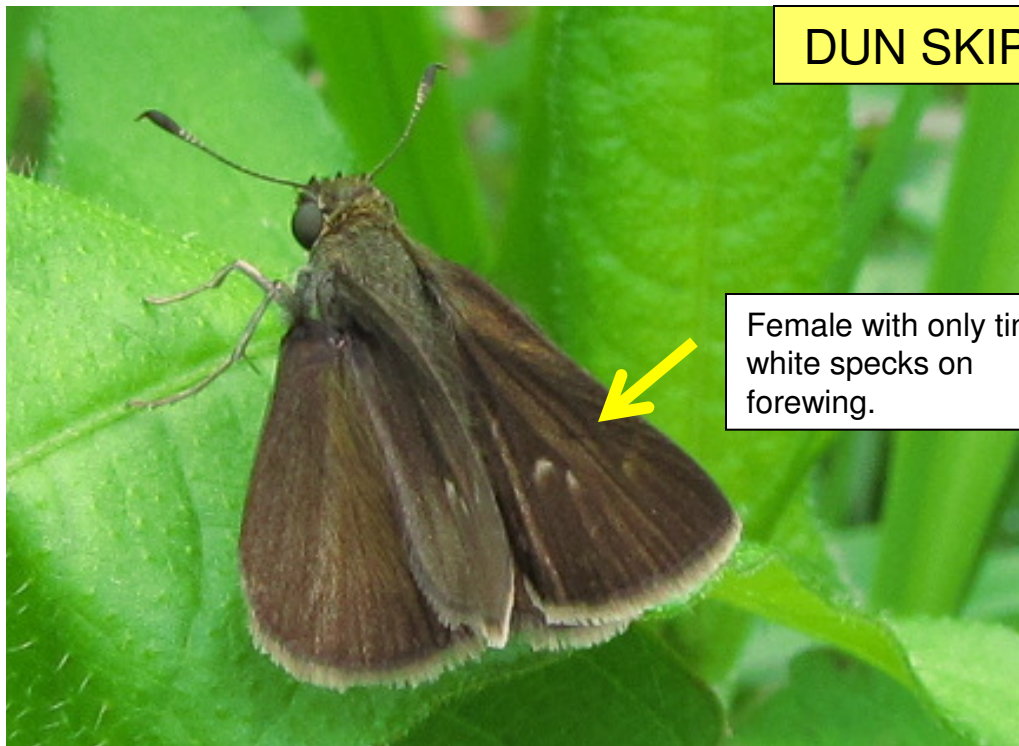


Underwing dark but with evident, irregular string of small, light markings.

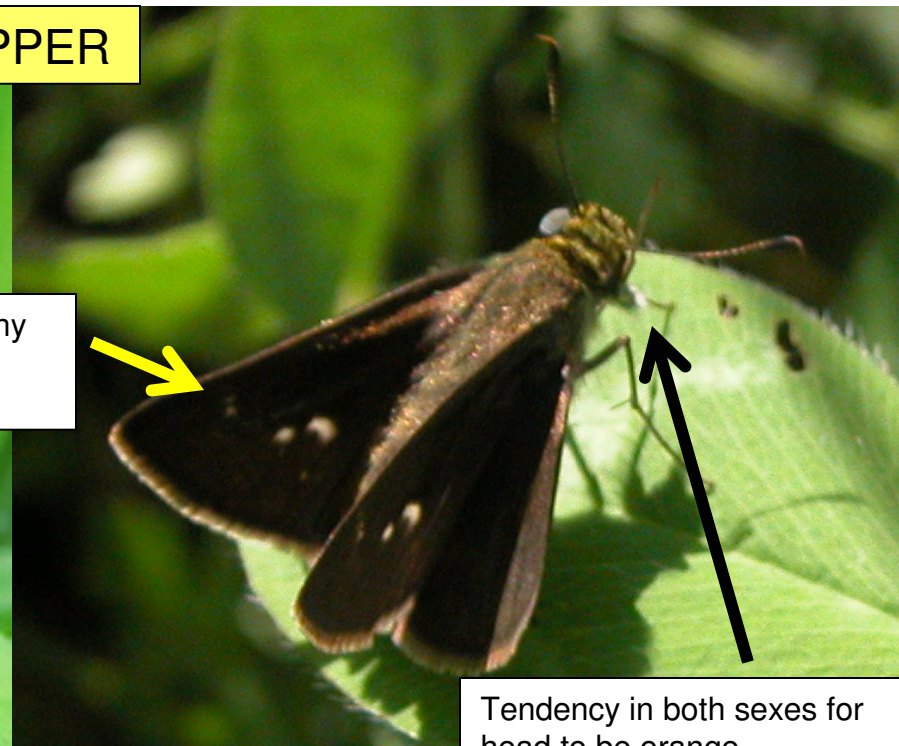




## DUN SKIPPER



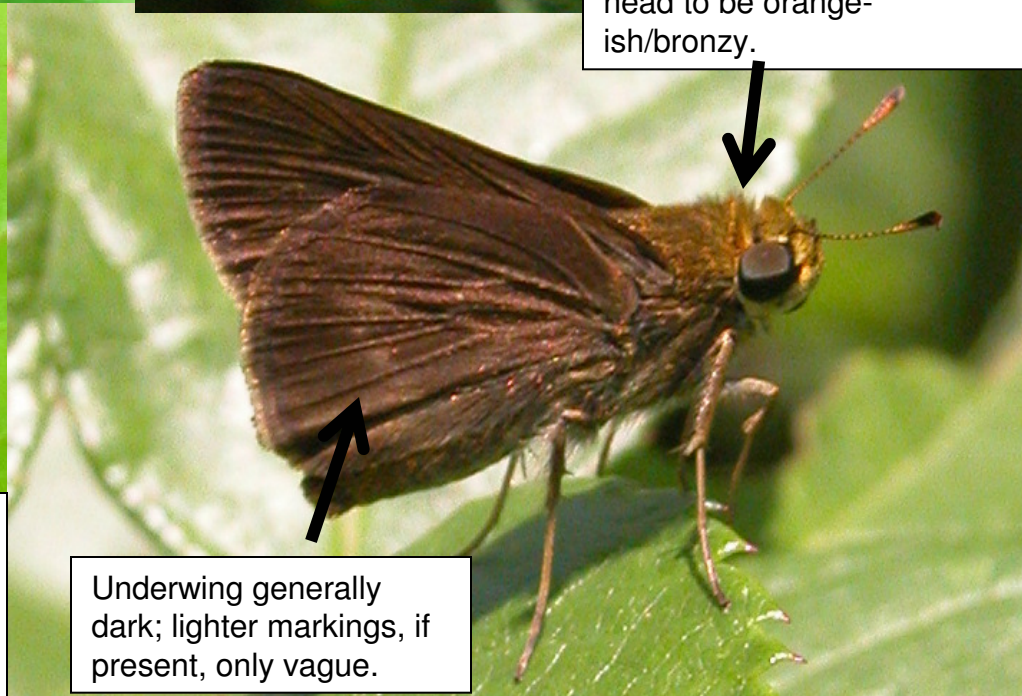
Female with only tiny white specks on forewing.



Tendency in both sexes for head to be orangeish/bronzy.



Male generally dark with stigma and orange highlighting only visible in strong light (such as in this flash shot).



Underwing generally dark; lighter markings, if present, only vague.



## NORTHERN BROKEN DASH

"stigma"

Males have 'dirty' orange on leading edge of forewing; wrist bracelet and pair of light spots at end of stigma.

"wrist bracelet"

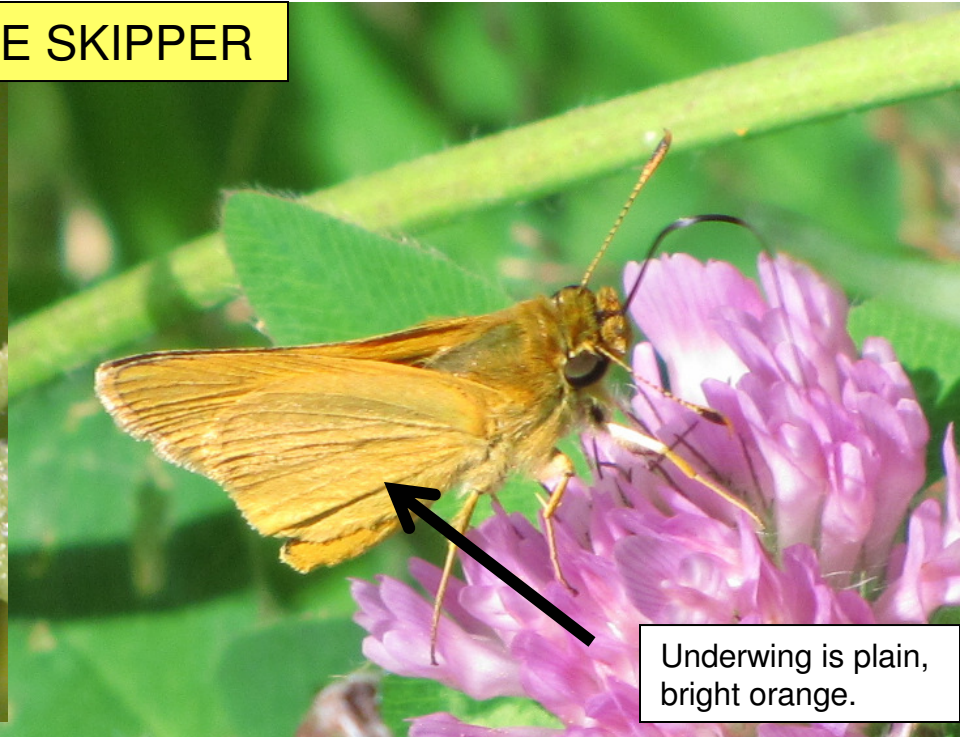
Female somewhat similar to Glassywing or Tawny-Edged, but, unlike former, light marks are creamy and, unlike latter, there is only hint of orange on forewing.

Underwing with strong "3" on dark background.

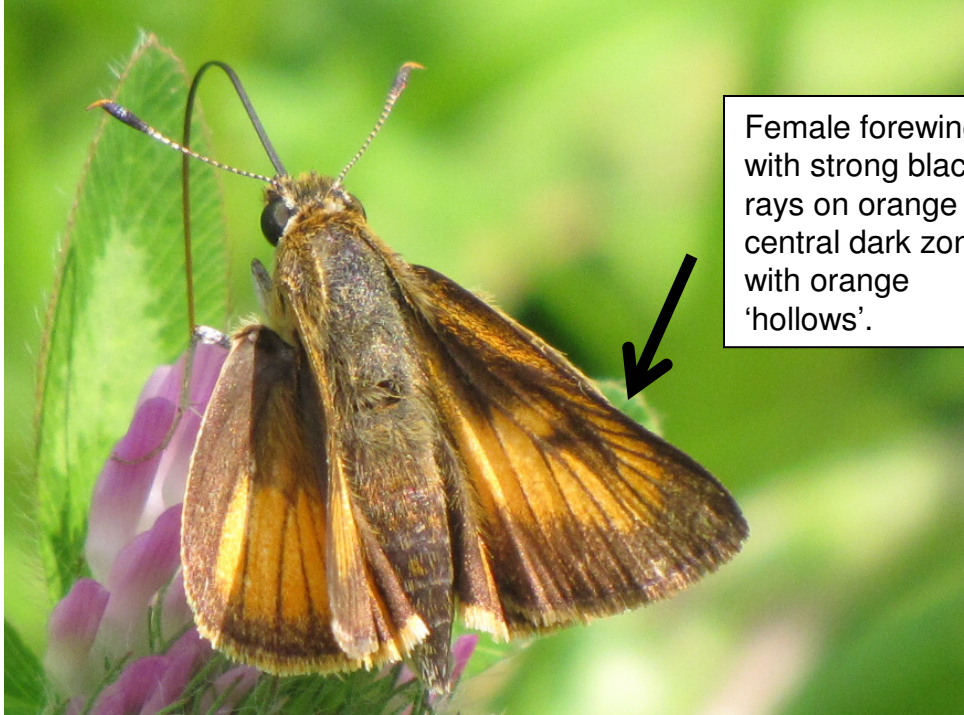


Male with narrow  
'arrow point' mark;  
stigma not evident.

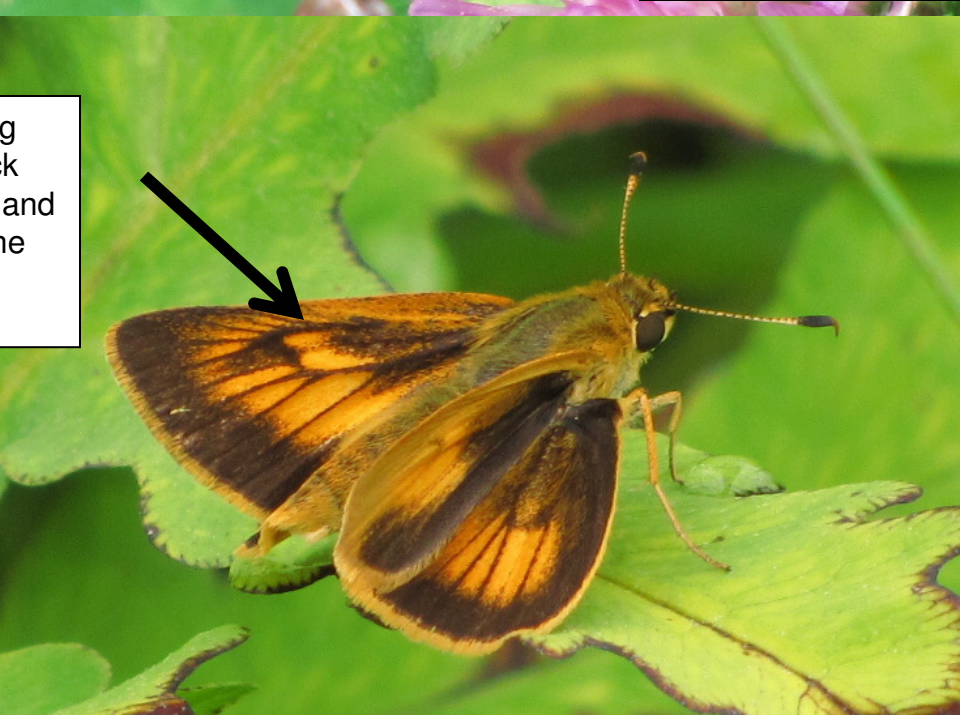
## DELEWARE SKIPPER



Underwing is plain,  
bright orange.



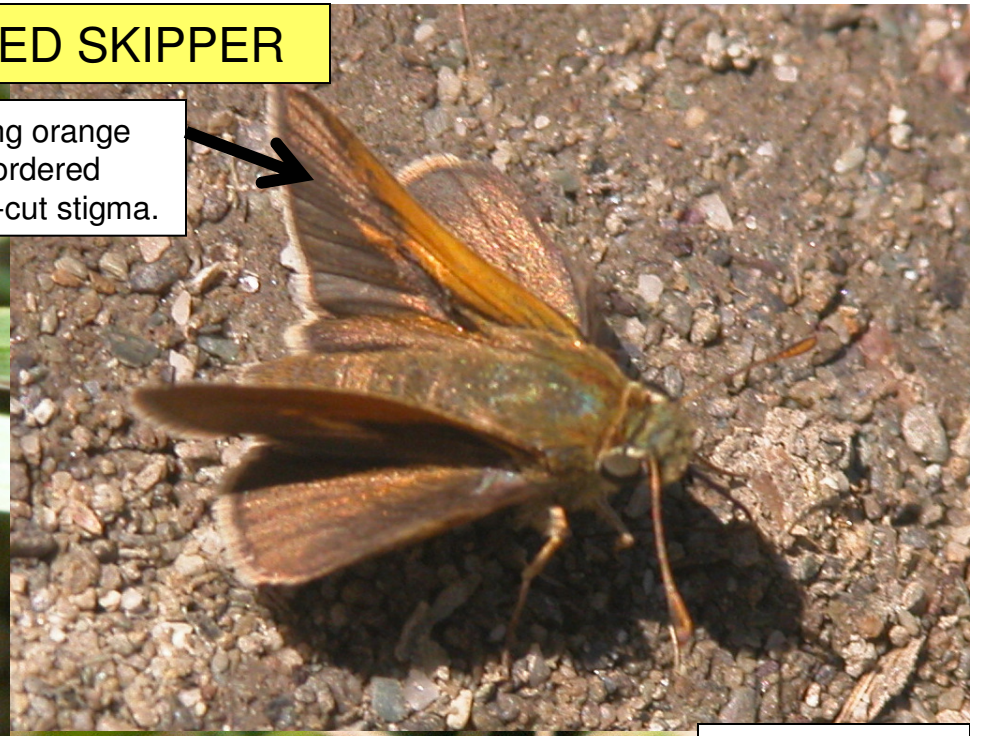
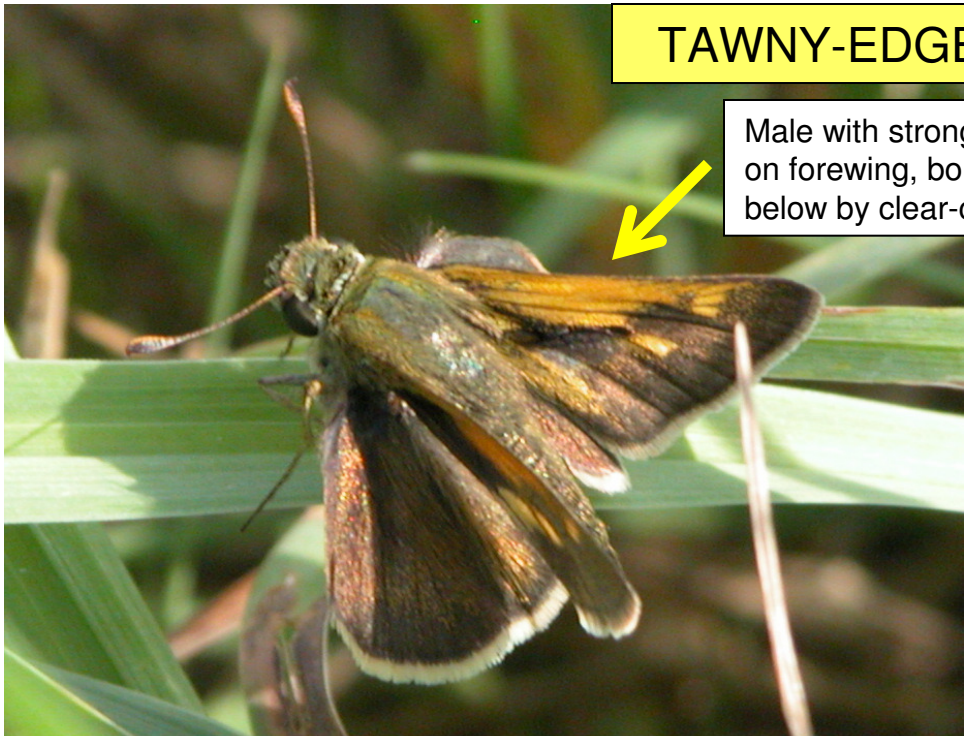
Female forewing  
with strong black  
rays on orange and  
central dark zone  
with orange  
'hollows'.



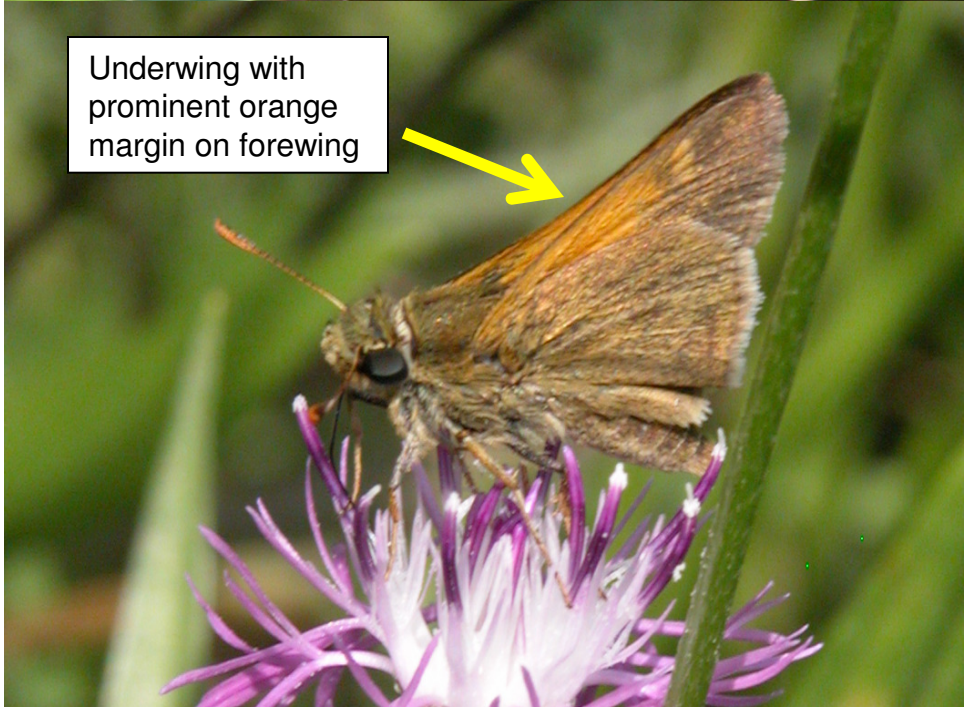


## TAWNY-EDGED SKIPPER

Male with strong orange on forewing, bordered below by clear-cut stigma.



Underwing with prominent orange margin on forewing



Female with large, light blotches, some forewing orange present.

