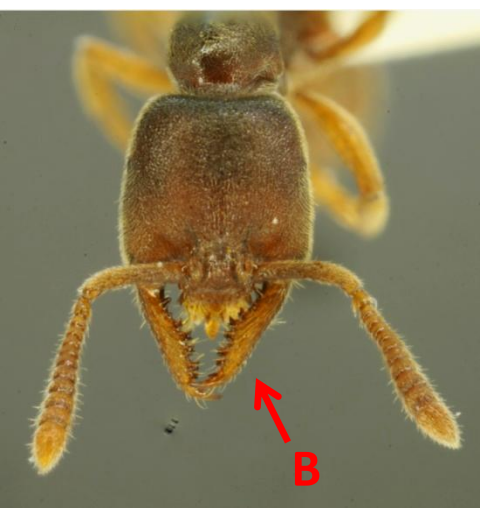


# *Stigmatomma pallipes* (Vampire Ant)



**ID Synopsis:** (A) Constricted gaster.  
(B) Thin mandibles with lots of teeth.

**Similar species:** *Ponera pennsylvanica* also has long gaster with constriction, but lacks the distinctive mandibles of *Stigmatomma pallipes*.

**Habitat:** Forests.

**Abundance:** Somewhat common.

**Etc:** Makes small colonies. Preys on centipedes, beetle larvae, and caterpillars.

