

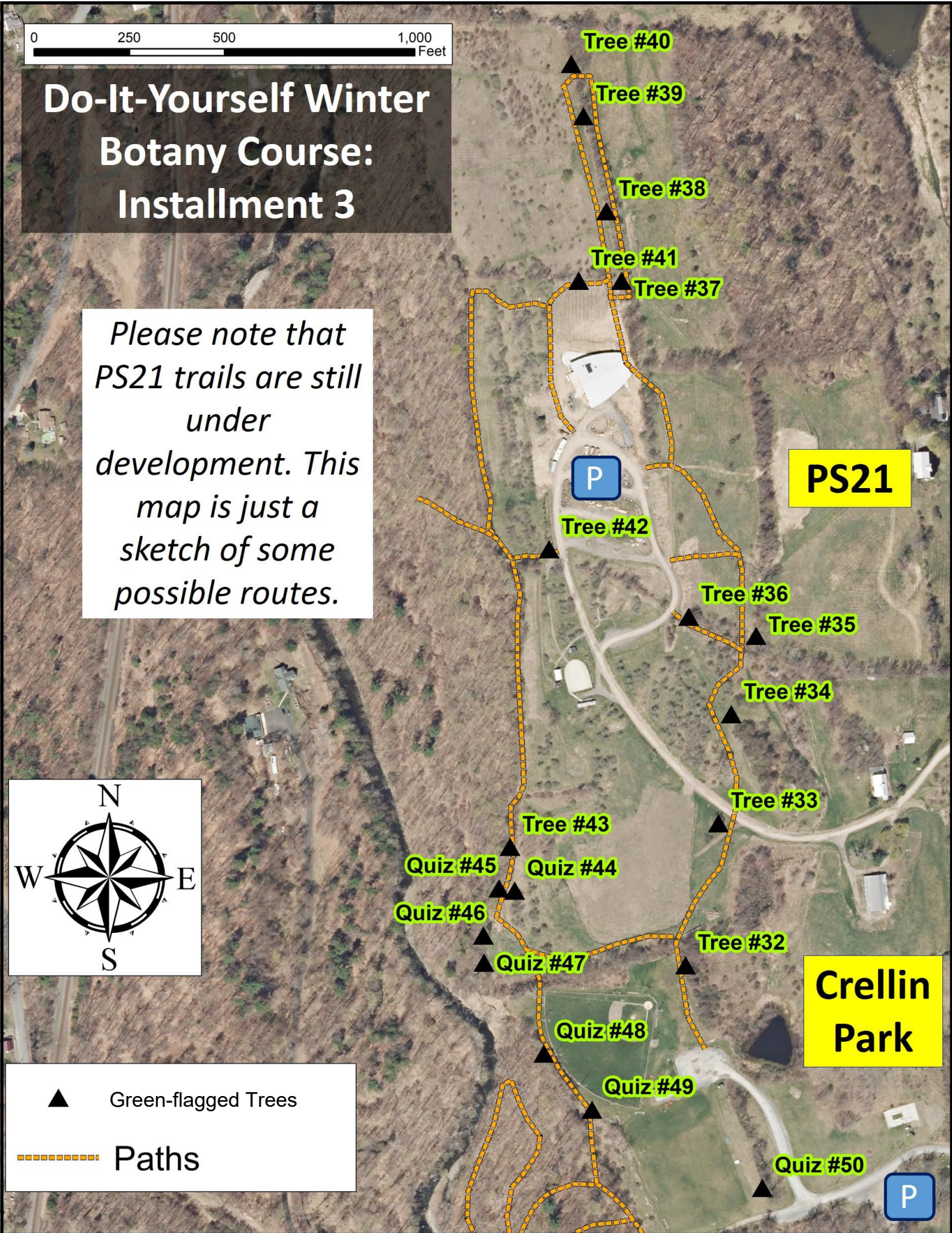
# Do-It-Yourself Winter Botany Course: Installation 3

*Please note that PS21 trails are still under development. This map is just a sketch of some possible routes.*



▲ Green-flagged Trees

----- Paths





# Woody Plants in Winter: A Self-guided Course at Crellin Park in Chatham, NY.

## Third Installment: Green-flagged Trees

You can access this last installment from the parking at Crellin Park or the parking at PS21; both organizations welcome you to use their parking areas. There are interlinking trails, so feel free to wander between the two places. Please respect the privacy signs around select buildings at PS21.

### This free course is composed of several ingredients:

- A set of flagged study trees (hot pink for the first installment; yellow for the second; & bright green for the third) at Crellin Park and at the adjoining PS21 land. The locations of third installment trees are shown on the accompanying map; please see [this map](#) for the previous trees. All flags are numbered. For the Study Trees, marked “Tree” on the map, the identifications are provided below. For the Quiz Trees, marked “Quiz” on the map, answers are provided [on-line](#) and are meant to be consulted after you’ve tried to ID the trees yourself.
- If you want to do all of the flagged trees as a self-quiz, then just use the map on the front and read no further until you’ve made your guesses. All quiz trees are species you will have already met, but they will include trees from earlier installments as well as from the current batch.
- [The course website](#) includes [a downloadable set of Winter Tree ID cards](#) (this course’s ‘text book’!) and links to some additional resources. Hard copies of those ID cards can be obtained by emailing Conrad at the address below.
- [An indexed video introduction to this Third Batch](#) is provided on-line (as our intros to our “[First Friends](#)” and “[Second Friends](#)”). These were filmed at Crellin Park and PS21. They are meant as your tour guide; they will provide you with some identification tips.

GREEN-FLAGGED STUDY TREES	
FLAG #32 = Staghorn Sumach	FLAG #33 = Willow
FLAG #34 = White Mulberry	FLAG #35 = Shagbark Hickory
FLAG #36 = American Elm	FLAG #37 = Hawthorn
FLAG #38 = European Buckthorn	FLAG #39 = Toringo Crabapple
FLAG #40 = Grey Dogwood	FLAG #41 = Multiflora Rose
FLAG #42 = Slippery Elm	FLAG #43 = Witch-hazel
Green Flags #44-50 are quiz trees.	

This is a collaboration between the Hawthorne Valley Farmscape Ecology Program, the Town of Chatham, and PS21.

Questions, comments or requests for printed versions of the winter bud cards can be directed to Conrad Vispo ([conrad@hawthornevalleyfarm.org](mailto:conrad@hawthornevalleyfarm.org)) or 518 938 1109.

We hope you enjoy - the flags will be up from 15 Jan. to 20 Mar. 2022.